

POWER TO LIFT

# CRANE GUIDE



Crane classification	RC/RCS	MC/MCS	Crane tm segment	
<b>K - Knuckle boom cranes</b>	270K-RC	270K-MC	2-14 tm	
	340K-RC	340K-MC		
	610K-RC	610K-MCS		
	710K-RCS	810K-MCS		
	810K-RC			
	910K-RCS			
	1120K-RCS			
	1130K-RCS			
	1320K-RCS			
<b>KS - Knuckle boom short crane</b>	1320KS-RCS			
<b>Z-fold cranes</b>	1444Z-RC			
<b>K - Knuckle boom cranes</b>	1610K-RCS		15-31 tm	
	1620K-RCS			
	1910K-RCS			
	1920K-RCS			
	2310K-RCS			
	2320K-RCS			
	2810K-RCS			
	2820K-RCS			
<b>K-HS - Knuckle boom high stand</b>		1800K-HS10-MC		
<b>T - Telescopic cranes</b>	1630T-RCS	1530T-MCS		
	2130T-RCS	1910T-MC 2030T-MCS		
<b>Z-fold cranes</b>	1643Z-RC	1643Z-MC		
	2243Z-RCS	1943Z-MC		
<b>L - Long boom cranes</b>	1730L-RCS	2110L-MC		
	2530L-RCS			
<b>S - Retracted knuckle boom</b>	2310S-RCS			
<b>K - Knuckle boom cranes</b>	3220K-RCS			32-59 tm
	4020K-RCS			
	5020K-RCS			
	7020K-RCS		60-95 tm	
	9520K-RCS			
<b>OK - Optimised knuckle boom</b>	7020OK-RCS			
	9520OK-RCS			

# Content

270K-MC	8
270K-RC	10
340K-MC	12
340K-RC	14
610K-MCS	16
610K-RC	18
710K-RCS	20
810K-MCS	22
810K-RC	24
910K-RCS	26
1120K-RCS	28
1130K-RCS	30
1320K-RCS	32
1330K-RCS	34
1610K-RCS	36
1620K-RCS	38
1910K-RCS	40
1920K-RCS	42
2310K-RCS	44
2320K-RCS	46
2810K-RCS	48
2820K-RCS	50
3220K-RCS	52
4020K-RCS	54
5020K-RCS	56
7020K-RCS	58
9520K-RCS	60
7020OK-RCS	62
9520OK-RCS	64
1320KS-RCS	66
1800K-HS10	68
1530T-MCS	70
1630T-RCS	72
1910T-MC	74
2030T-MCS	76
2130T-RCS	78
1444Z-RC	80

# Content

1643Z-MC	82
1643Z-RC	84
1943Z-MC	86
2243Z-RCS	88
1730L-RCS	90
2110L-MC	92
2530L-RCS	94
2310S-RCS	96



# Danish crane manufacturer

HMF has specialized in developing truck cranes that are strong, compact, and nice to work with since 1952. Together with skilled employees and dedicated partners we sell, service, and install Danish quality cranes in more than 40 countries.

## Loader cranes for many purposes

Our cranes are used in the entire world by a wide range of companies like haulage contractors, builders' merchants, road and recovery services, and self-employed hauliers.



### Compact and light

HMF truck cranes are characterized by their light tare weight and compact design.

This gives you extra space on the truck body as well as extra kgs for what you need to move.



### Strong, sturdy, and durable

HMF truck cranes are designed to last for many years.

With high-tensile steel, dual-coating, and internal hose-routing our cranes are fit for all kinds of weather and terrain.

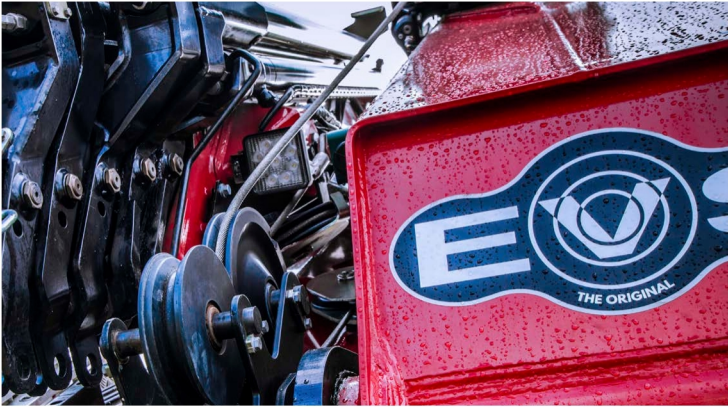


### Smooth operation

HMF truck cranes are designed for a flexible and smooth operation.

This makes them suitable for different kinds of lifting tasks in all kinds of industries.





---

## Dynamic and popular stability system

HMF cranes are widely known for their popular EVS stability system. EVS stands for electronic vehicle stability system.

EVS is an intelligent and sophisticated stability safety system which actively monitors vehicle stability.

It is easy to operate, so easy that most often you - as the crane operator - will not notice it is active, unless you are in a situation that might become critical.

### Why choose EVS?

- Continuous monitoring of the vehicle stability
- Optimized lifting capacity in the entire working area – also in front of the vehicle
- Dynamic system that includes the current load on your vehicle in order to reach further

### The system includes all these conditions when operating

- Load on the vehicle
- Load on the crane
- Speed
- Heel of the vehicle

Therefore, you will get a warning before a situation becomes critical. This means that you can trust the system to automatically limit inappropriate movements and to stop at the designated limit.



---

### MC

Manually operated crane with full speed (Manual Control).

### MCS

Manually operated crane with electro-hydraulic speed adaptation system (Manual Control Superior).

### RC

Radio remote controlled crane (Remote Control).

### RCS

Radio remote controlled crane with PVG 32 control valve and HD5 electronic speed adaptation system (Remote Control Superior).

#### Disclaimer

Even though we do our best, errors in content may occur. The contents of this material is for general information purpose. Cranes in the pictures may be featured with optional equipment, which do not correspond to the standard version. Please note, that weights may vary with a 5% deviation. As we update content continuously, please ensure you have the latest information. You can check this on [hmfcranes.com](http://hmfcranes.com).

# 270K-MC



## Selected basics



MC



RCI



EQC

## Selected options



WIDTH



LIGHT

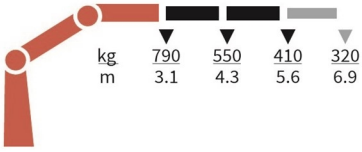


TANK

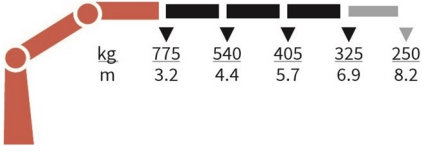
## Specifications

	Unit	270-K2	270-K3
	tm	2,5	2,4
	m	5,64	6,99
	kgm	390	390
	°	370	370
	mm	1527	1527
	mm	1700	1700
	mm	538	564
	mm	3000	3000
	mm	3900	3900
	Kg	386	421
	Kg	59	59
	bar	240	240
	l/min	12	10
	kW	4	3,5

270-K2-MC



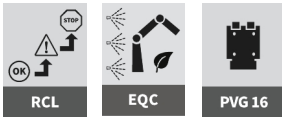
270-K3-MC



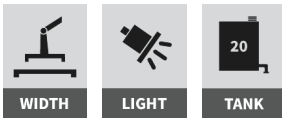
# 270K-RC



## Selected basics



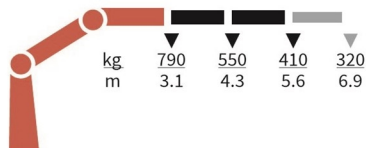
## Selected options



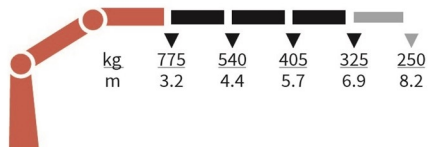
## Specifications

	Unit	270-K2	270-K3
	tm	2,5	2,4
	m	5,64	6,99
	kgm	390	390
	°	370	370
	mm	1527	1527
	mm	1700	1700
	mm	538	564
	mm	3000	3000
	mm	3900	3900
	Kg	386	421
	Kg	59	59
	bar	240	240
	l/min	12	10
	kW	4	3,5

270-K2-RC



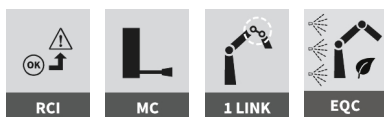
270-K3-RC



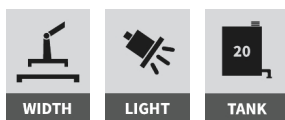
# 340K-MC



## Selected basics



## Selected options

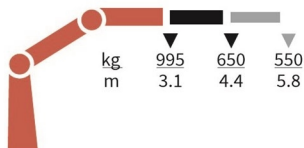


## Specifications

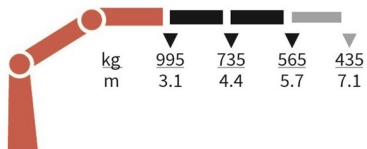
	Unit	340-K1	340-K2	340-K3
	tm	3,2	3,2	3,2
	m	4,39	5,76	7,15
	kgm	550	600	600
	°	370	370	370
	mm	1591	1591	1591
	mm	1700	1700	1700
	mm	516	516	516
	mm	3300	3300	3300
	mm	3900	3900	3900
	Kg	418	468	508
	Kg	72	72	72
	bar	220	240	240
	l/min	15	15	12
	kW	5,5	6,0	5,0



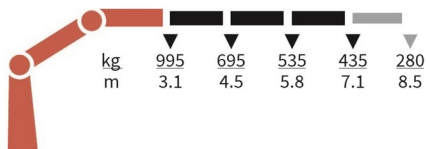
340-K1-MC



340-K2-MC



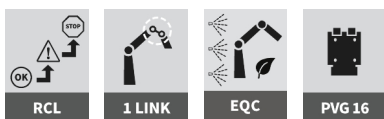
340-K3-MC



# 340K-RC



## Selected basics



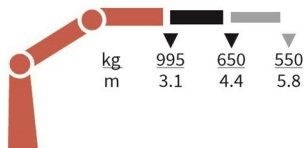
## Selected options



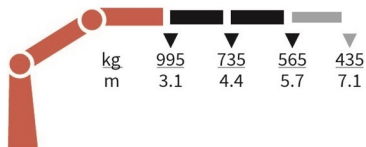
## Specifications

	Unit	340-K1	340-K2	340-K3
	tm	3,2	3,2	3,2
	m	4,39	5,76	7,15
	kgm	550	600	600
	°	370	370	370
	mm	1591	1591	1591
	mm	1700	1700	1700
	mm	516	516	516
	mm	3300	3300	3300
	mm	3900	3900	3900
	Kg	418	468	508
	Kg	72	72	72
	bar	220	240	240
	l/min	15	15	12
	kW	5,5	6,0	5,0

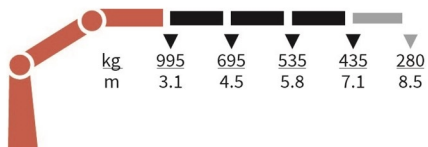
340-K1-RC



340-K2-RC



340-K3-RC



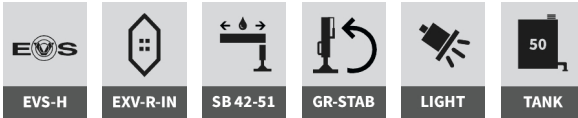
# 610K-MCS



## Selected basics



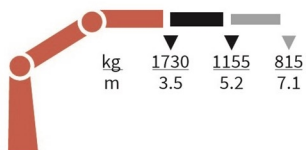
## Selected options



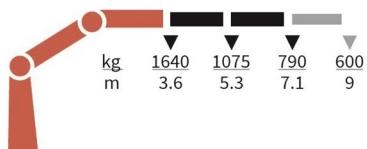
## Specifications

	Unit	610-K1	610-K2	610-K3	610-K4
	tm	6	5,9	5,6	5,5
	m	5,2	7,1	9	10,8
	kgm	840	840	840	840
	°	400	400	400	400
	mm	1840	1840	1860	1895
	mm	2120	2120	2120	2120
	mm	664	664	664	664
	mm	3400	3400	3400	3400
	mm	5200	5200	5200	5200
	Kg	630	705	775	835
	Kg	115	115	115	115
	bar	325	325	325	325
	l/min	25	25	25	25
	kW	13	13	13	13

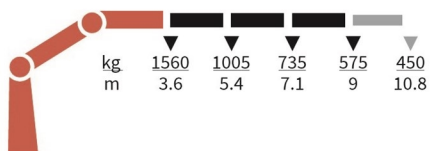
610-K1-MCS



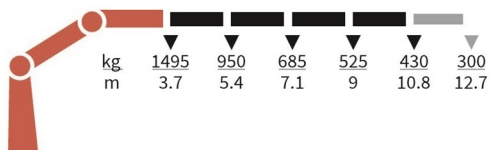
610-K2-MCS



610-K3-MCS



610-K4-MCS



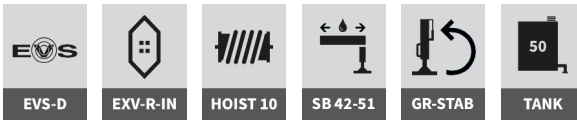
# 610K-RC



## Selected basics



## Selected options



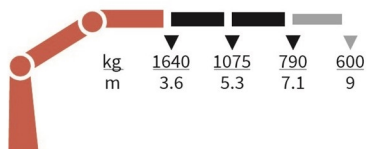
## Specifications

	Unit	610-K1	610-K2	610-K3	610-K4
	tm	6	5,9	5,6	5,5
	m	5,2	7,1	9	10,8
	kgm	840	840	840	840
	°	400	400	400	400
	mm	1840	1840	1860	1895
	mm	2120	2120	2120	2120
	mm	664	664	664	664
	mm	3400	3400	3400	3400
	mm	5200	5200	5200	5200
	Kg	630	705	775	835
	Kg	115	115	115	115
	bar	325	325	325	325
	l/min	25	25	25	25
	kW	14	14	14	14

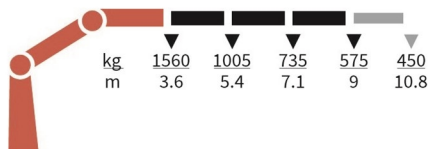
610-K1-RC



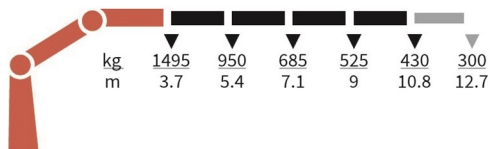
610-K2-RC



610-K3-RC



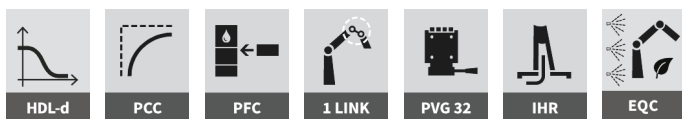
610-K4-RC



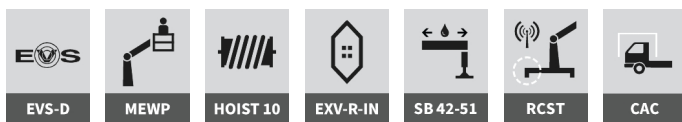
# 710K-RCS



## Selected basics



## Selected options

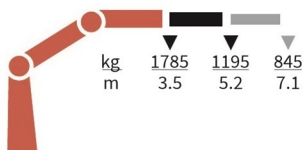


## Specifications

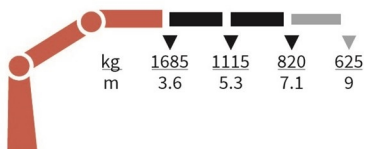
	Unit	710-K1	710-K2	710-K3	710-K4
	tm	6,3	6,1	5,8	5,7
	m	5,2	7,1	9	10,8
	kgm	840	840	840	840
	°	400	400	400	400
	mm	1840	1840	1860	1895
	mm	2120	2120	2120	2120
	mm	664	664	664	664
	mm	3400	3400	3400	3400
	mm	5200	5200	5200	5200
	Kg	630	705	775	835
	Kg	115	115	115	115
	bar	335	335	335	335
	l/min	40	40	40	40
	kW	22	22	22	22



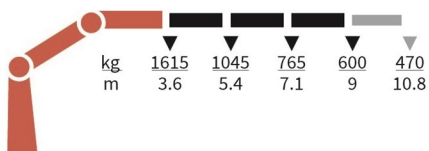
710-K1-RCS



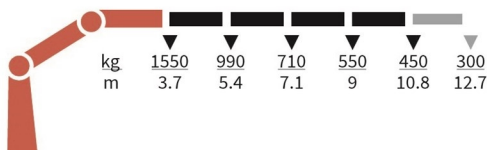
710-K2-RCS



710-K3-RCS



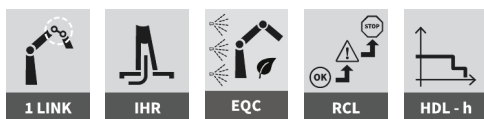
710-K4-RCS



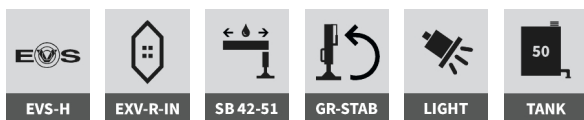
# 810K-MCS



## Selected basics



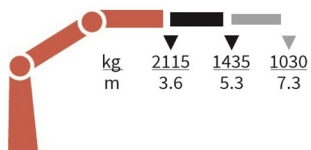
## Selected options



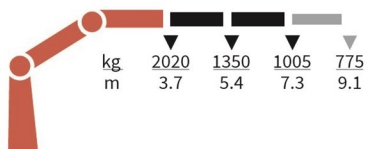
## Specifications

	Unit	810-K1	810-K2	810-K3	810-K4
	tm	7,6	7,5	7,3	7,1
	m	5,3	7,3	9,1	11
	kgm	840	840	840	840
	°	400	400	400	400
	mm	1910	1910	1910	1910
	mm	2220	2220	2220	2220
	mm	664	664	664	664
	mm	3400	3400	3400	3400
	mm	5200	5200	5200	5200
	Kg	665	740	810	870
	Kg	115	115	115	115
	bar	325	325	325	325
	l/min	35	35	35	35
	kW	19	19	19	19

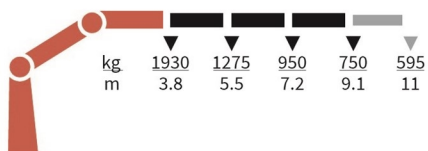
### 810-K1-MCS



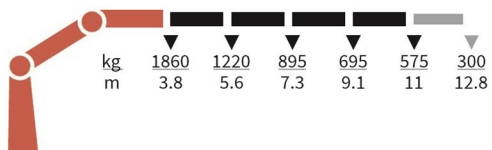
### 810-K2-MCS



### 810-K3-MCS



### 810-K4-MCS



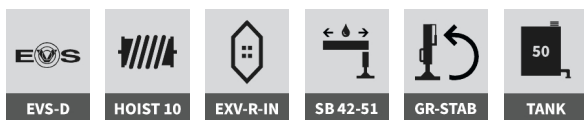
# 810K-RC



## Selected basics



## Selected options



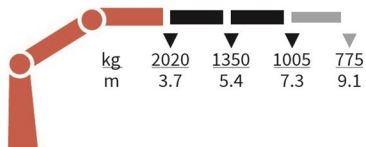
## Specifications

	Unit	810-K1	810-K2	810-K3	810-K4
	tm	7,6	7,5	7,3	7,1
	m	5,3	7,3	9,1	11
	kgm	840	840	840	840
	°	400	400	400	400
	mm	1910	1910	1910	1910
	mm	2220	2220	2220	2220
	mm	664	664	664	664
	mm	3400	3400	3400	3400
	mm	5200	5200	5200	5200
	Kg	665	740	810	870
	Kg	115	115	115	115
	bar	325	325	325	325
	l/min	35	35	35	35
	kW	22	22	22	22

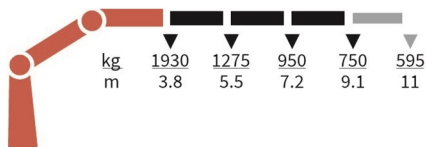
810-K1-RC



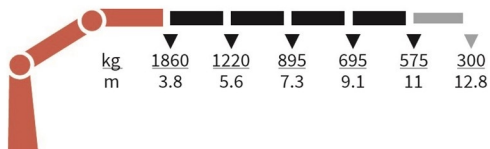
810-K2-RC



810-K3-RC



810-K4-RC



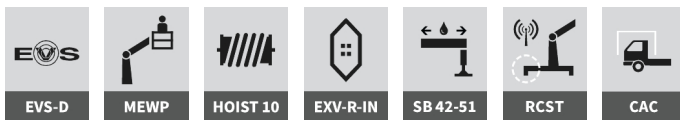
# 910K-RCS



## Selected basics



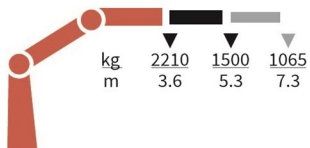
## Selected options



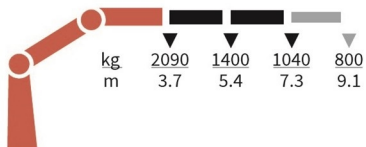
## Specifications

	Unit	910-K1	910-K2	910-K3	910-K4
	tm	8	7,7	7,6	7,3
	m	5,3	7,3	9,1	11
	kgm	840	840	840	840
	°	400	400	400	400
	mm	1910	1910	1910	1910
	mm	2220	2220	2220	2220
	mm	664	664	664	664
	mm	3400	3400	3400	3400
	mm	5200	5200	5200	5200
	Kg	665	740	810	870
	Kg	115	115	115	115
	bar	335	335	335	335
	l/min	50	50	50	50
	kW	28	28	28	28

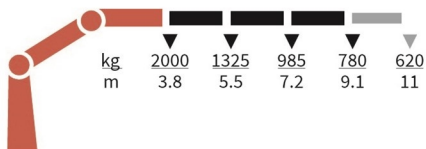
### 910-K1-RCS



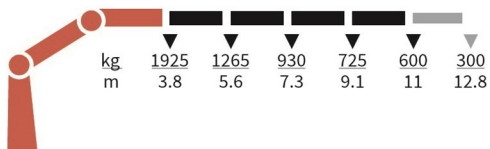
### 910-K2-RCS



### 910-K3-RCS



### 910-K4-RCS



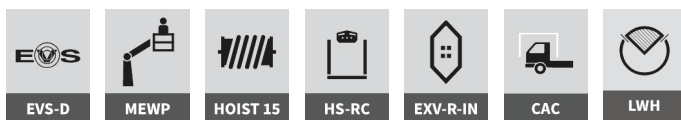
# 1120K-RCS



## Selected basics



## Selected options

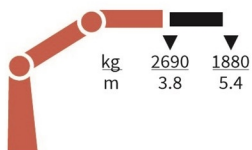


## Specifications

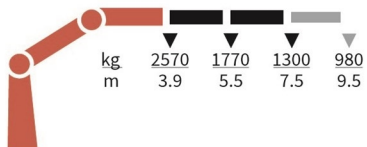
	Unit	1120-K1	1120-K2	1120-K3	1120-K4	1120-K5
	tm	10,2	9,9	9,7	9,4	9,2
	m	5,5	7,5	9,7	11,8	14
	kgm	1325	1325	1325	1325	1325
	°	420	420	420	420	420
	mm	2135	2135	2135	2135	2135
	mm	2350	2350	2350	2350	2350
	mm	747	747	747	747	747
	mm	4165	4165	4165	4165	4165
	mm	5140	5140	5140	5140	5140
	Kg	1000	1105	1205	1295	1375
	Kg	160	160	160	160	160
	bar	345	345	345	345	345
	l/min	60 - 80	60 - 80	60 - 80	60 - 80	60 - 80
	kW	40 - 58	40 - 58	40 - 58	40 - 58	40 - 58



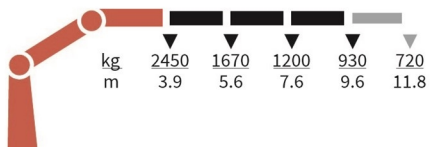
1120-K1-RCS



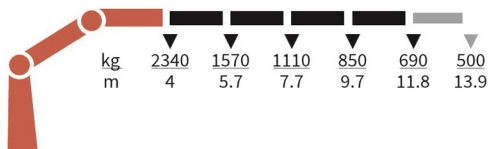
1120-K2-RCS



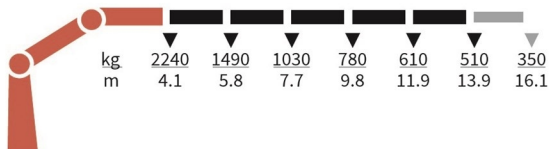
1120-K3-RCS



1120-K4-RCS



1120-K5-RCS



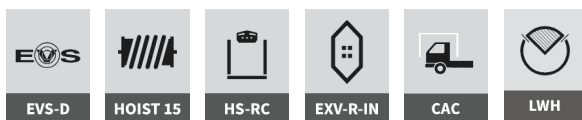
# 1130K-RCS



## Selected basics



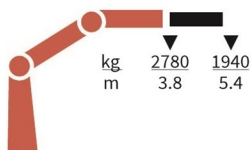
## Selected options



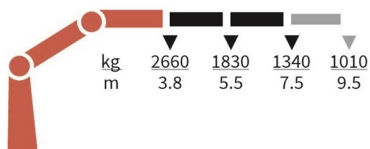
## Specifications

	Unit	1130-K1	1130-K2	1130-K3	1130-K4	1130-K5
	tm	10,5	10,2	9,9	9,7	9,5
	m	5,5	7,5	9,7	11,8	14
	kgm	1325	1325	1325	1325	1325
	°	420	420	420	420	420
	mm	2135	2135	2135	2135	2135
	mm	2350	2350	2350	2350	2350
	mm	747	747	747	747	747
	mm	4165	4165	4165	4165	4165
	mm	5140	5140	5140	5140	5140
	Kg	985	1090	1190	1280	1360
	Kg	160	160	160	160	160
	bar	345	345	345	345	345
	l/min	70 - 100	70 - 100	70 - 100	70 - 100	70 - 100
	kW	40 - 58	40 - 58	40 - 58	40 - 58	40 - 58

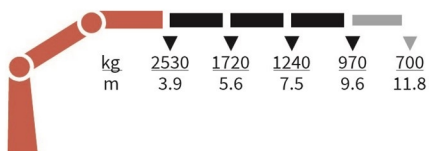
1130-K1-RCS



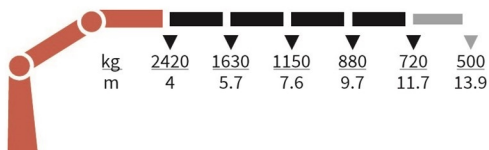
1130-K2-RCS



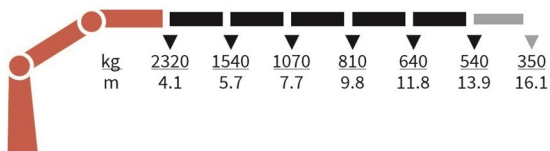
1130-K3-RCS



1130-K4-RCS



1130-K5-RCS



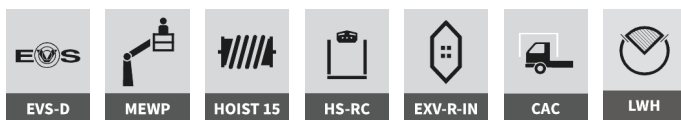
# 1320K-RCS



## Selected basics



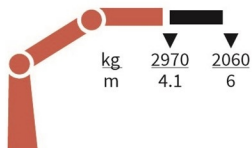
## Selected options



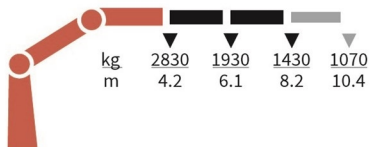
## Specifications

	Unit	1320-K1	1320-K2	1320-K3	1320-K4	1320-K5
	tm	12,3	11,9	11,6	11,3	11
	m	6,1	8,2	10,5	12,7	15
	kgm	1325	1325	1325	1325	1325
	°	420	420	420	420	420
	mm	2135	2135	2135	2135	2135
	mm	2500	2500	2500	2500	2500
	mm	747	747	747	747	747
	mm	4615	4615	4615	4615	4615
	mm	5590	5590	5590	5590	5590
	Kg	1115	1240	1350	1445	1530
	Kg	170	170	170	170	170
	bar	345	345	345	345	345
	l/min	60 - 80	60 - 80	60 - 80	60 - 80	60 - 80
	kW	40 - 58	40 - 58	40 - 58	40 - 58	40 - 58

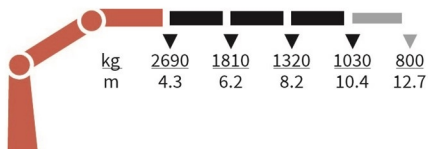
1320-K1-RCS



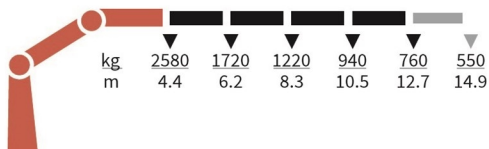
1320-K2-RCS



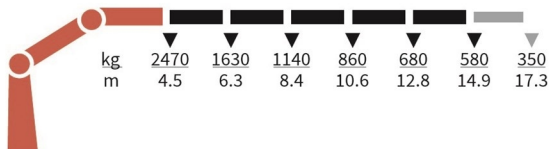
1320-K3-RCS



1320-K4-RCS



1320-K5-RCS



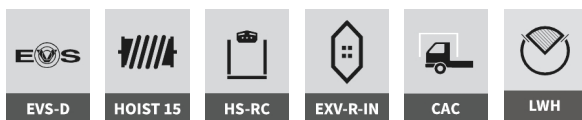
# 1330K-RCS



## Selected basics



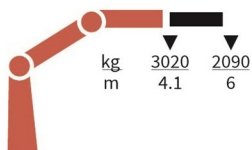
## Selected options



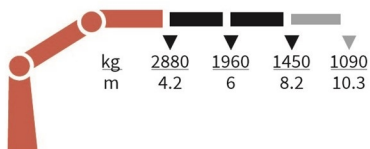
## Specifications

	Unit	1330-K1	1330-K2	1330-K3	1330-K4	1330-K5
	tm	12,4	12,1	11,7	11,4	11,2
	m	6,1	8,2	10,5	12,7	15
	kgm	1325	1325	1325	1325	1325
	°	420	420	420	420	420
	mm	2135	2135	2135	2135	2135
	mm	2500	2500	2500	2500	2500
	mm	747	747	747	747	747
	mm	4615	4615	4615	4615	4615
	mm	5590	5590	5590	5590	5590
	Kg	1080	1205	1315	1410	1495
	Kg	170	170	170	170	170
	bar	345	345	345	345	345
	l/min	70 - 100	70 - 100	70 - 100	70 - 100	70 - 100
	kW	40 - 58	40 - 58	40 - 58	40 - 58	40 - 58

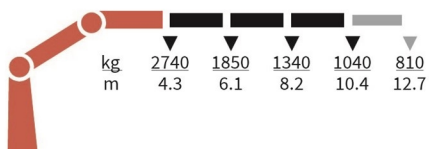
1330-K1-RCS



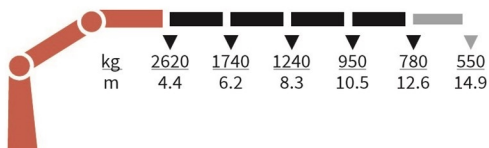
1330-K2-RCS



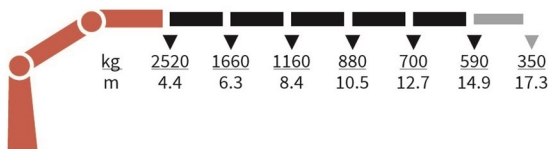
1330-K3-RCS



1330-K4-RCS



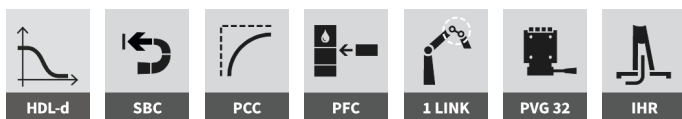
1330-K5-RCS



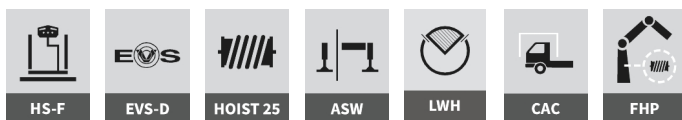
# 1610K-RCS



## Selected basics



## Selected options

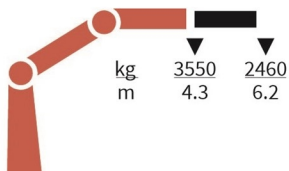


## Specifications

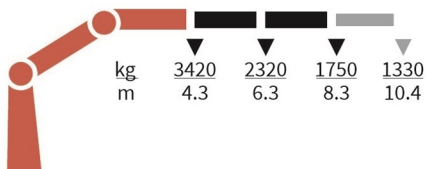
	Unit	1610-K1	1610-K2	1610-K3	1610-K4	1610-K5	1610-K6
	tm	15,3	14,8	14,3	13,9	13,6	13,2
	m	6,3	8,4	10,5	12,8	15	17,3
	kgm	1795	1795	1795	1795	1795	1795
	°	400	400	400	400	400	400
	mm	2250	2250	2250	2250	2250	2250
	mm	2500	2500	2500	2500	2500	2500
	mm	830	830	830	830	830	830
	mm	4615	4615	4615	4615	4615	4615
	mm	6470	6470	6470	6470	6470	6470
	Kg	1310	1450	1590	1725	1845	1940
	Kg	200	200	200	200	200	200
	bar	365	365	365	365	365	365
	l/min	70 - 100	70 - 100	70 - 100	70 - 100	70 - 100	70 - 100
	kW	43 - 61	43 - 61	43 - 61	43 - 61	43 - 61	43 - 61



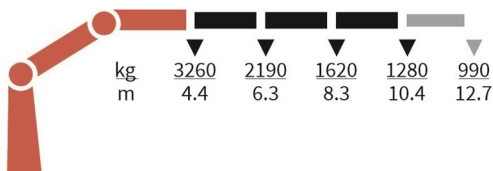
1610-K1-RCS



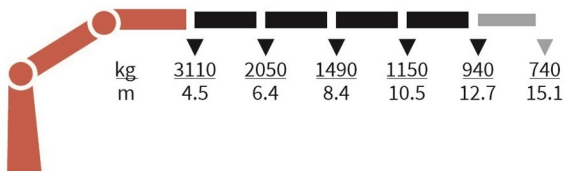
1610-K2-RCS



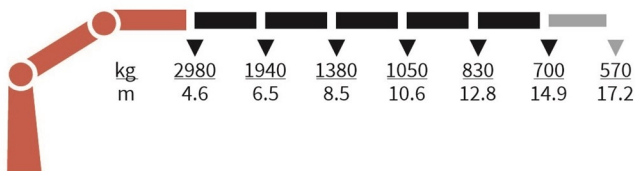
1610-K3-RCS



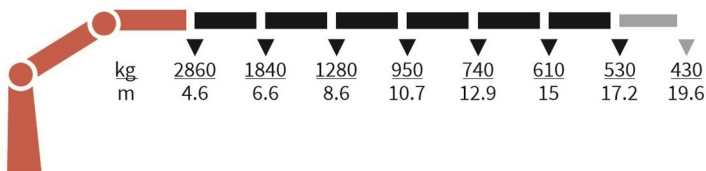
1610-K4-RCS



1610-K5-RCS



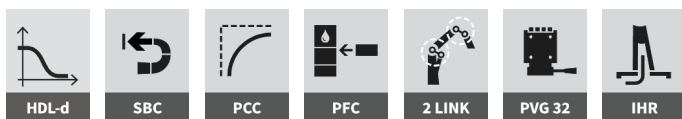
1610-K6-RCS



# 1620K-RCS



## Selected basics



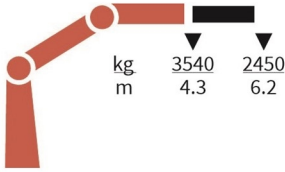
## Selected options



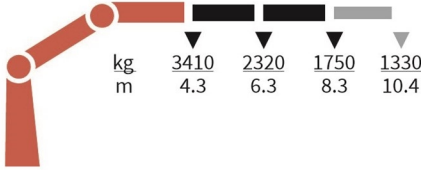
## Specifications

	Unit	1620-K1	1620-K2	1620-K3	1620-K4	1620-K5	1620-K6
	tm	15,2	14,7	14,3	13,9	13,5	13,2
	m	6,3	8,4	10,5	12,8	15	17,3
	kgm	1795	1795	1795	1795	1795	1795
	°	400	400	400	400	400	400
	mm	2250	2250	2250	2250	2250	2250
	mm	2500	2500	2500	2500	2500	2500
	mm	830	830	830	830	830	830
	mm	4615	4615	4615	4615	4615	4615
	mm	6470	6470	6470	6470	6470	6470
	Kg	1360	1500	1640	1775	1895	1990
	Kg	200	200	200	200	200	200
	bar	365	365	365	365	365	365
	l/min	70 - 100	70 - 100	70 - 100	70 - 100	70 - 100	70 - 100
	kW	43 - 61	43 - 61	43 - 61	43 - 61	43 - 61	43 - 61

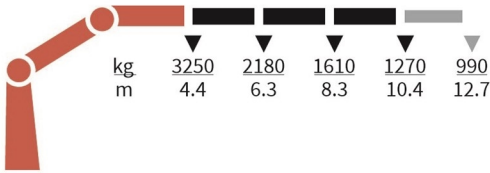
1620-K1-RCS



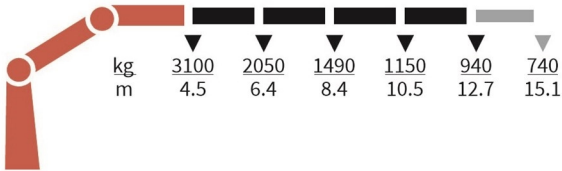
1620-K2-RCS



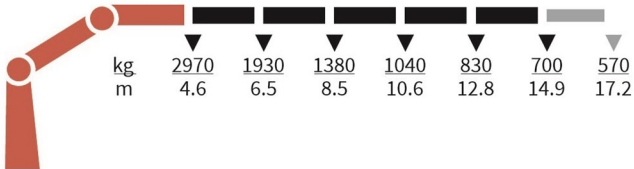
1620-K3-RCS



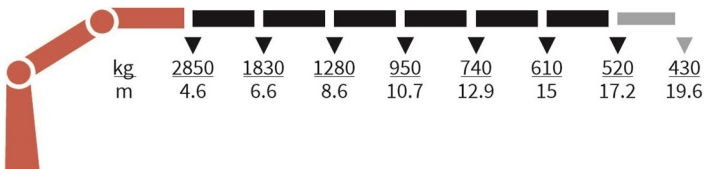
1620-K4-RCS



1620-K5-RCS



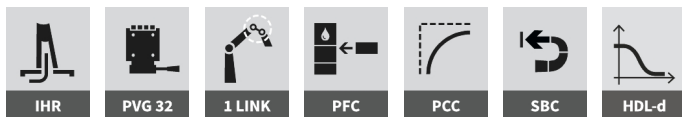
1620-K6-RCS



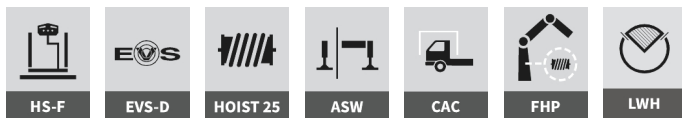
# 1910K-RCS



## Selected basics



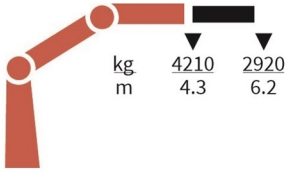
## Selected options



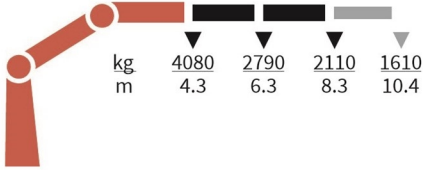
## Specifications

	Unit	1910-K1	1910-K2	1910-K3	1910-K4	1910-K5	1910-K6
	tm	18,2	17,6	17,2	16,8	16,4	16,1
	m	6,3	8,4	10,5	12,8	15	17,3
	kgm	1795	1795	1795	1795	1795	1795
	°	400	400	400	400	400	400
	mm	2250	2250	2250	2250	2250	2250
	mm	2500	2500	2500	2500	2500	2500
	mm	830	830	830	830	830	830
	mm	4615	4615	4615	4615	4615	4615
	mm	6470	6470	6470	6470	6470	6470
	Kg	1370	1510	1650	1785	1905	2000
	Kg	200	200	200	200	200	200
	bar	365	365	365	365	365	365
	l/min	70 - 100	70 - 100	70 - 100	70 - 100	70 - 100	70 - 100
	kW	43 - 61	43 - 61	43 - 61	43 - 61	43 - 61	43 - 61

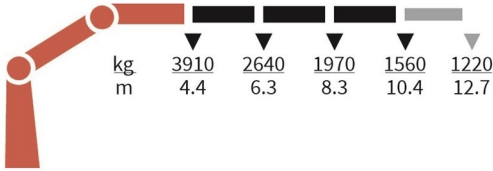
1910-K1-RCS



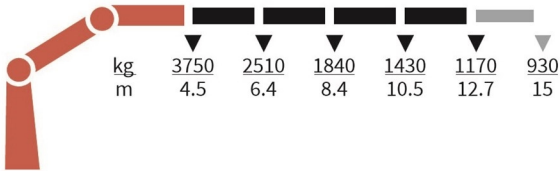
1910-K2-RCS



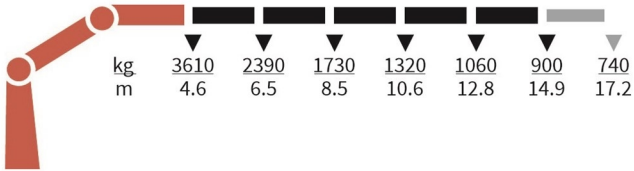
1910-K3-RCS



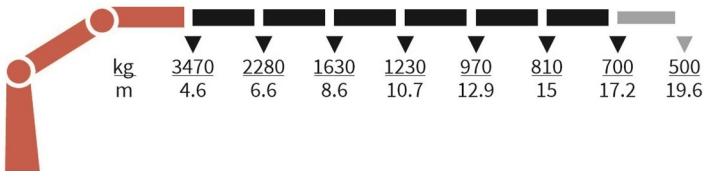
1910-K4-RCS



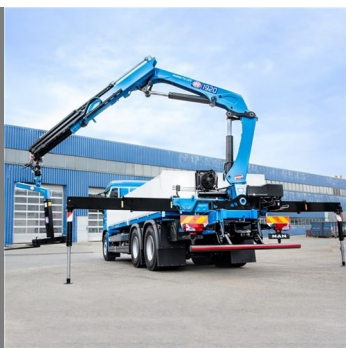
1910-K5-RCS



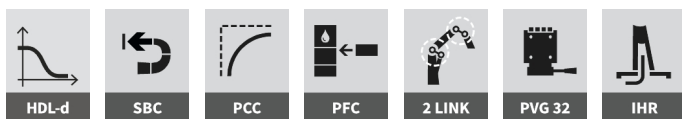
1910-K6-RCS



# 1920K-RCS



## Selected basics



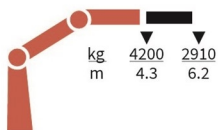
## Selected options



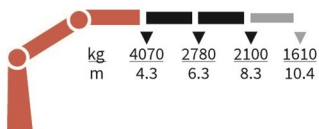
## Specifications

	Unit	1920-K1	1920-K2	1920-K3	1920-K4	1920-K5	1920-K6
	tm	18,1	17,6	17,2	16,8	16,4	16,1
	m	6,3	8,4	10,5	12,8	15	17,3
	kgm	1795	1795	1795	1795	1795	1795
	°	400	400	400	400	400	400
	mm	2250	2250	2250	2250	2250	2250
	mm	2500	2500	2500	2500	2500	2500
	mm	830	830	830	830	830	830
	mm	4615	4615	4615	4615	4615	4615
	mm	6470	6470	6470	6470	6470	6470
	Kg	1420	1560	1700	1835	1955	2050
	Kg	200	200	200	200	200	200
	bar	365	365	365	365	365	365
	l/min	70 - 100	70 - 100	70 - 100	70 - 100	70 - 100	70 - 100
	kW	43 - 61	43 - 61	43 - 61	43 - 61	43 - 61	43 - 61

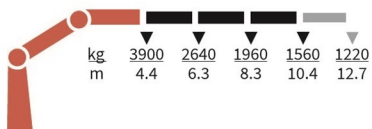
1920-K1-RCS



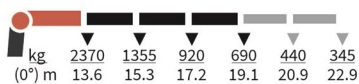
1920-K2-RCS



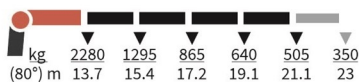
1920-K3-RCS



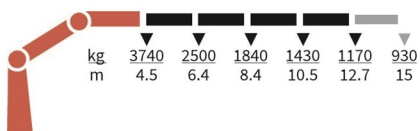
FJ700-K3



FJ700-K4



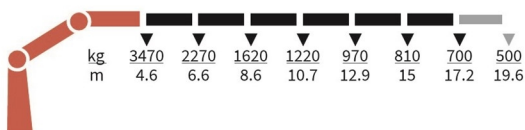
1920-K4-RCS



1920-K5-RCS



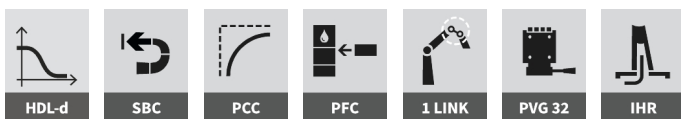
1920-K6-RCS



# 2310K-RCS



## Selected basics



## Selected options

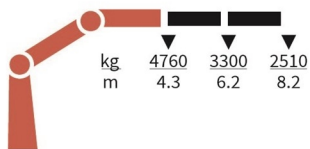


## Specifications

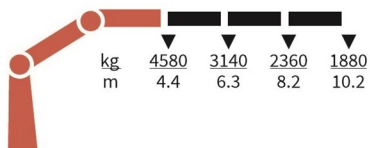
	Unit	2310-K2	2310-K3	2310-K4	2310-K5	2310-K6	2310-K7	2310-K8
	tm	20,6	20,2	19,7	19,2	18,8	18,4	18,1
	m	8,3	10,3	12,5	14,8	17,1	19,3	21,6
	kgm	2763	2763	2763	2763	2763	2763	2763
	°	400	400	400	400	400	400	400
	mm	2295	2295	2295	2295	2295	2295	2335
	mm	2500	2500	2500	2500	2500	2500	2500
	mm	885	885	885	885	885	995	995
	mm	5575	5575	5575	5575	5575	5575	5575
	mm	7400	7400	7400	7400	7400	7400	7400
	Kg	1800	1955	2110	2250	2375	2480	2565
	Kg	290	290	290	290	290	290	290
	bar	365	365	365	365	365	365	365
	l/min	70 - 100	70 - 100	70 - 100	70 - 100	70 - 100	70 - 100	70 - 100
	kW	43 - 61	43 - 61	43 - 61	43 - 61	43 - 61	43 - 61	43 - 61



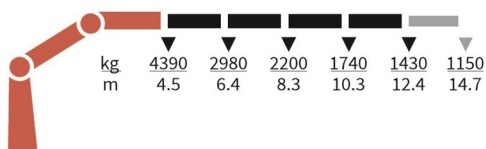
2310-K2-RCS



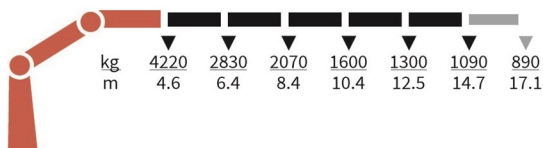
2310-K3-RCS



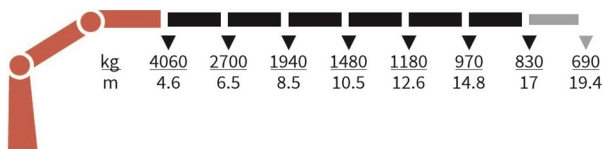
2310-K4-RCS



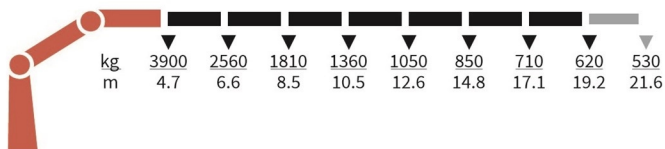
2310-K5-RCS



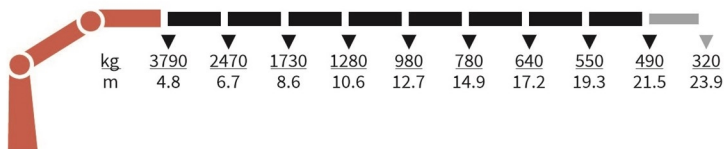
2310-K6-RCS



2310-K7-RCS



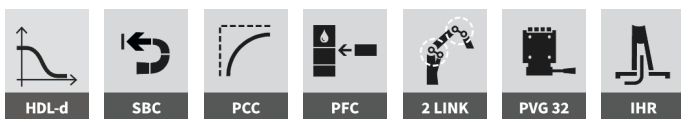
2310-K8-RCS



# 2320K-RCS



## Selected basics



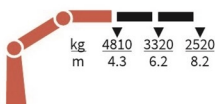
## Selected options



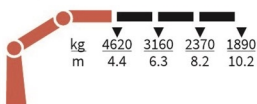
## Specifications

	Unit	2320-K2	2320-K3	2320-K4	2320-K5	2320-K6	2320-K7	2320-K8
	tm	20,8	20,3	19,9	19,4	19	18,6	18,3
	m	8,3	10,3	12,5	14,8	17,1	19,3	21,6
	kgm	2763	2763	2763	2763	2763	2763	2763
	°	400	400	400	400	400	400	400
	mm	2295	2295	2295	2295	2295	2295	2335
	mm	2500	2500	2500	2500	2500	2500	2500
	mm	885	885	885	885	885	995	995
	mm	5575	5575	5575	5575	5575	5575	5575
	mm	7400	7400	7400	7400	7400	7400	7400
	Kg	1870	2025	2210	2350	2475	2580	2665
	Kg	290	290	290	290	290	290	290
	bar	365	365	365	365	365	365	365
	l/min	70 - 100	70 - 100	70 - 100	70 - 100	70 - 100	70 - 100	70 - 100
	kW	43 - 61	43 - 61	43 - 61	43 - 61	43 - 61	43 - 61	43 - 61

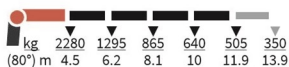
2320-K2-RCS



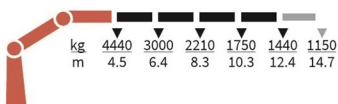
2320-K3-RCS



FJ700-K4



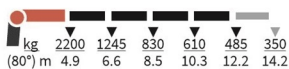
2320-K4-RCS



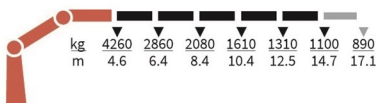
FJ700-K3



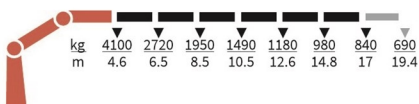
FJ700-K4



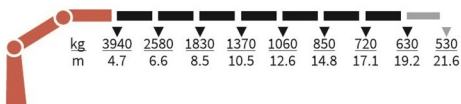
2320-K5-RCS



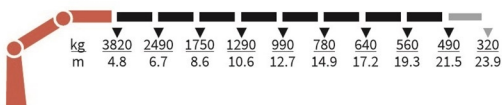
2320-K6-RCS



2320-K7-RCS



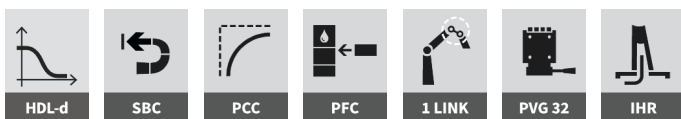
2320-K8-RCS



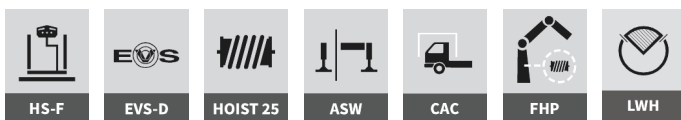
# 2810K-RCS



## Selected basics



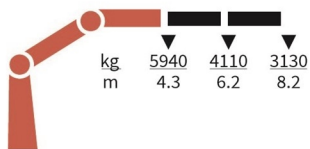
## Selected options



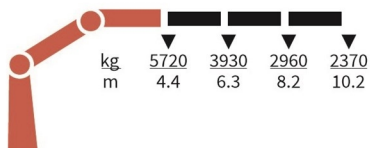
## Specifications

	Unit	2810-K2	2810-K3	2810-K4	2810-K5	2810-K6	2810-K7	2810-K8
	tm	25,7	25,2	24,6	24,2	23,8	23,4	23
	m	8,3	10,3	12,5	14,8	17,1	19,3	21,6
	kgm	2763	2763	2763	2763	2763	2763	2763
	°	400	400	400	400	400	400	400
	mm	2295	2295	2295	2295	2295	2295	2335
	mm	2500	2500	2500	2500	2500	2500	2500
	mm	885	885	885	885	885	995	995
	mm	5575	5575	5575	5575	5575	5575	5575
	mm	7400	7400	7400	7400	7400	7400	7400
	Kg	1895	2065	2265	2415	2555	2660	2745
	Kg	290	290	290	290	290	290	290
	bar	365	365	365	365	365	365	365
	l/min	70 - 120	70 - 120	70 - 120	70 - 120	70 - 120	70 - 120	70 - 120
	kW	43 - 73	43 - 73	43 - 73	43 - 73	43 - 73	43 - 73	43 - 73

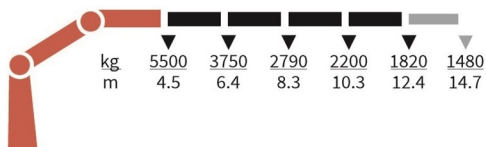
2810-K2-RCS



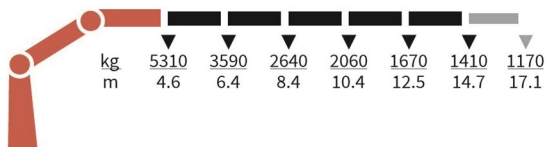
2810-K3-RCS



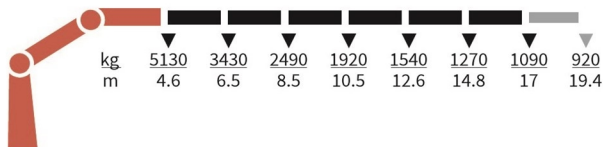
2810-K4-RCS



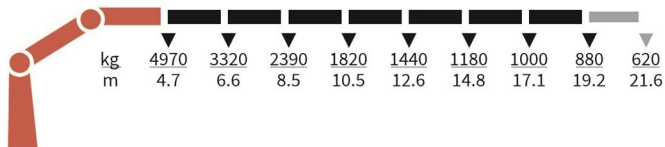
2810-K5-RCS



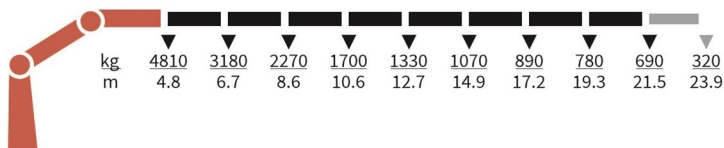
2810-K6-RCS



2810-K7-RCS



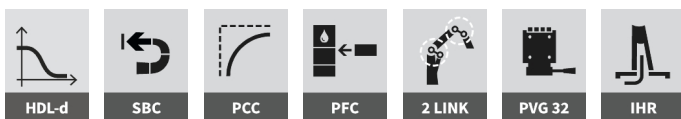
2810-K8-RCS



# 2820K-RCS



## Selected basics



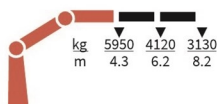
## Selected options



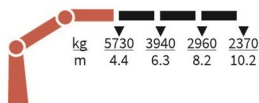
## Specifications

	Unit	2820-K2	2820-K3	2820-K4	2820-K5	2820-K6	2820-K7	2820-K8
	tm	25,8	25,2	24,7	24,3	23,8	23,5	23
	m	8,3	10,3	12,5	14,8	17,1	19,3	21,6
	kgm	2763	2763	2763	2763	2763	2763	2763
	°	400	400	400	400	400	400	400
	mm	2295	2295	2295	2295	2295	2295	2335
	mm	2500	2500	2500	2500	2500	2500	2500
	mm	885	885	885	885	885	995	995
	mm	5575	5575	5575	5575	5575	5575	5575
	mm	7400	7400	7400	7400	7400	7400	7400
	Kg	1980	2150	2350	2500	2640	2745	2830
	Kg	290	290	290	290	290	290	290
	bar	365	365	365	365	365	365	365
	l/min	70 - 120	70 - 120	70 - 120	70 - 120	70 - 120	70 - 120	70 - 120
	kW	43 - 73	43 - 73	43 - 73	43 - 73	43 - 73	43 - 73	43 - 73

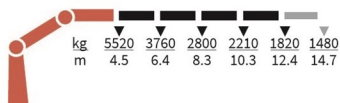
2820-K2-RCS



2820-K3-RCS



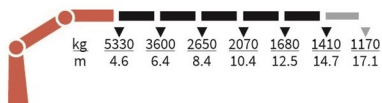
2820-K4-RCS



FJ700-K4



2820-K5-RCS



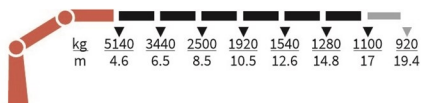
FJ700-K3



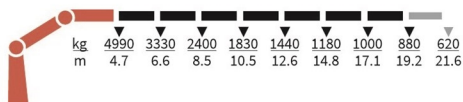
FJ700-K4



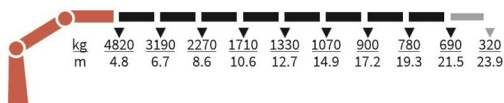
2820-K6-RCS



2820-K7-RCS



2820-K8-RCS



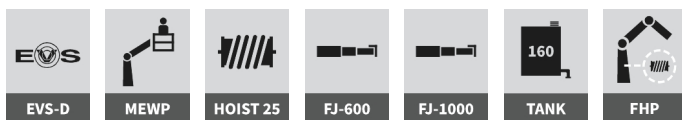
# 3220K-RCS



## Selected basics



## Selected options

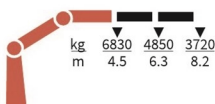


## Specifications

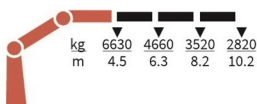
	Unit	3220-K2	3220-K3	3220-K4	3220-K5	3220-K6	3220-K7	3220-K8
	tm	30,7	29,8	29,5	28,7	27,9	27,8	27,1
	m	8,3	10,3	12,4	14,6	16,8	19	21,3
	kgm	3800	3800	3800	3800	3800	3800	3800
	°	∞	∞	∞	∞	∞	∞	∞
	mm	2350	2350	2350	2350	2350	2350	2350
	mm	2500	2500	2500	2500	2500	2500	2500
	mm	1024	1024	1024	1024	1024	1130	1130
	mm	5550	5550	5550	5550	5550	5550	5550
	mm	6430	6430	6430	6430	6430	6430	6430
	Kg	2590	2790	2990	3160	3320	3470	3595
	Kg	370	370	370	370	370	370	370
	bar	365	365	365	365	365	365	365
	l/min	80 - 130	80 - 130	80 - 130	80 - 130	80 - 130	80 - 130	80 - 130
	kW	49 - 79	49 - 79	49 - 79	49 - 79	49 - 79	49 - 79	49 - 79



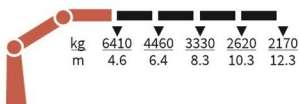
3220-K2-RCS



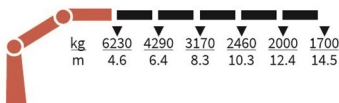
3220-K3-RCS



3220-K4-RCS



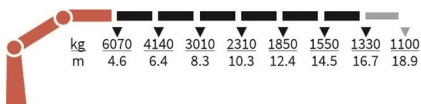
3220-K5-RCS



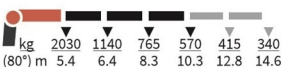
FJ1000-K5



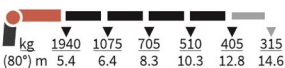
3220-K6-RCS



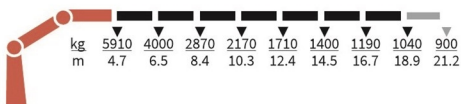
FJ600-K3



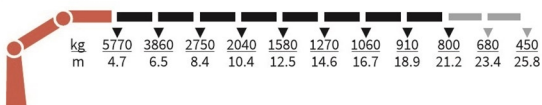
FJ600-K4



3220-K7-RCS



3220-K8-RCS



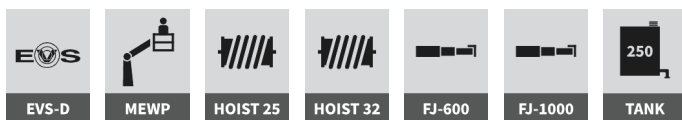
# 4020K-RCS



## Selected basics



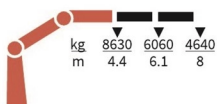
## Selected options



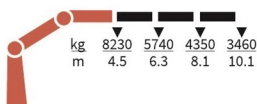
## Specifications

	Unit	4020-K2	4020-K3	4020-K4	4020-K5	4020-K6	4020-K7	4020-K8
	tm	38	37	35,9	34,9	34,7	33,9	33,7
	m	8,1	10,1	12,2	14,35	16,6	18,95	21,3
	kgm	4000	4000	4000	4000	4000	4000	4000
	°	∞	∞	∞	∞	∞	∞	∞
	mm	2384	2384	2384	2384	2384	2384	2384
	mm	2518	2518	2518	2518	2518	2518	2518
	mm	1148	1148	1148	1148	1148	1274	1274
	mm	5550	5550	5550	5550	5550	5550	5550
	mm	7770	7770	7770	7770	7770	7770	7770
	Kg	3150	3410	3660	3900	4080	4240	4400
	Kg	470	470	470	470	470	470	470
	bar	365	365	365	365	365	365	365
	l/min	80 - 110	80 - 110	80 - 110	80 - 110	80 - 110	80 - 110	80 - 110
	kW	49 - 68	49 - 68	49 - 68	49 - 68	49 - 68	49 - 68	49 - 68

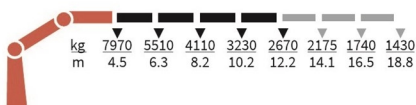
4020-K2-RCS



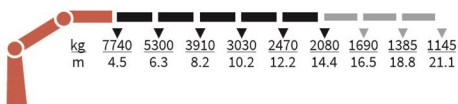
4020-K3-RCS



4020-K4-RCS



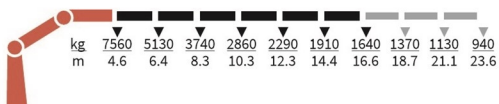
4020-K5-RCS



FJ1000-K4



4020-K6-RCS



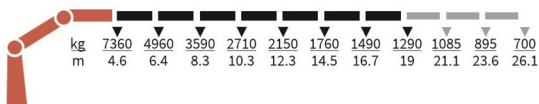
FJ600-K3



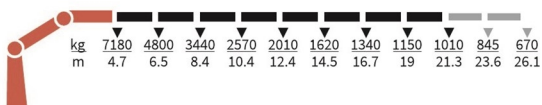
FJ600-K4



4020-K7-RCS



4020-K8-RCS



# 5020K-RCS



## Selected basics



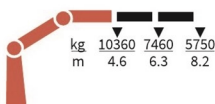
## Selected options



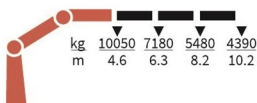
## Specifications

	Unit	5020-K2	5020-K3	5020-K4	5020-K5	5020-K6	5020-K7	5020-K8
	tm	47,7	46,2	45,9	44,7	43,6	43,4	42,4
	m	8,25	10,25	12,5	14,5	16,75	19,1	21,45
	kgm	5000	5000	5000	5000	5000	5000	5000
	°	∞	∞	∞	∞	∞	∞	∞
	mm	2398	2398	2398	2398	2398	2438	2438
	mm	2519	2519	2519	2519	2519	2519	2519
	mm	1198	1198	1198	1198	1198	1298	1298
	mm	5550	5550	5550	5550	5550	5550	5550
	mm	7770	7770	7770	7770	7770	7770	7770
	Kg	3610	3900	4170	4420	4620	4800	4975
	Kg	500	500	500	500	500	500	500
	bar	365	365	365	365	365	365	365
	l/min	80 - 110	80 - 110	80 - 110	80 - 110	80 - 110	80 - 110	80 - 110
	kW	49 - 68	49 - 68	49 - 68	49 - 68	49 - 68	49 - 68	49 - 68

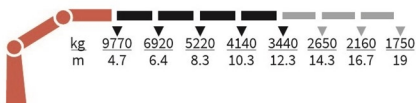
5020-K2-RCS



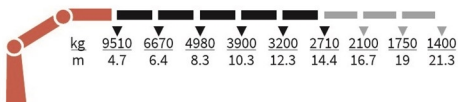
5020-K3-RCS



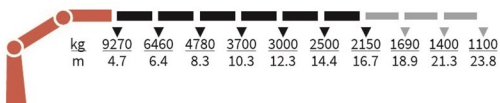
5020-K4-RCS



5020-K5-RCS



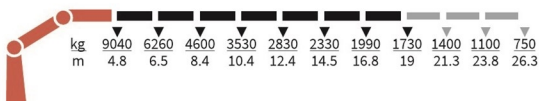
5020-K6-RCS



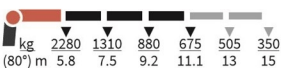
FJ1000-K5



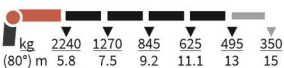
5020-K7-RCS



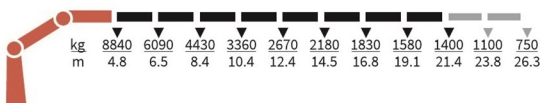
FJ600-K3



FJ600-K4



5020-K8-RCS



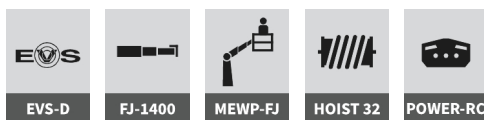
# 7020K-RCS



## Selected basics



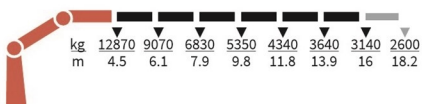
## Selected options



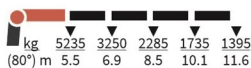
## Specifications

	Unit	7020-K6	7020-K7	7020-K8
	tm	57,9	57,2	56,1
	m	16,1	18,3	20,6
	kgm	7142	7142	7142
	°	∞	∞	∞
	mm	2435	2435	2455
	mm	2550	2550	2550
	mm	1540	1540	1540
	mm			
	mm	8420	8420	8420
	Kg	5715	5915	6115
	Kg	925	925	925
	bar	375	375	375
	l/min	80 - 120	80 - 120	80 - 120
	kW	50 - 75	50 - 75	50 - 75

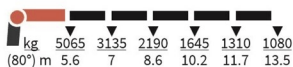
## 7020-K6-RCS



## FJ1400-K4



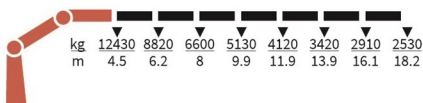
## FJ1400-K5



## FJ1400-K6



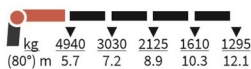
## 7020-K7-RCS



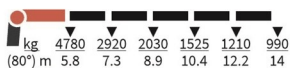
## FJ1400-K3



## FJ1400-K4



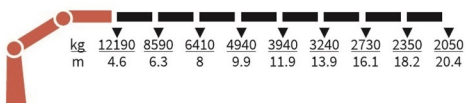
## FJ1400-K5



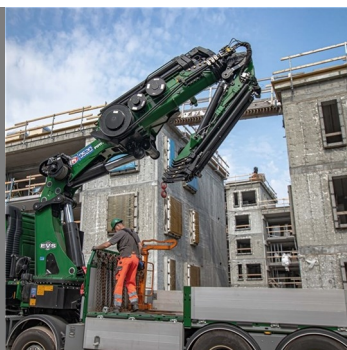
## FJ1400-K6



## 7020-K8-RCS



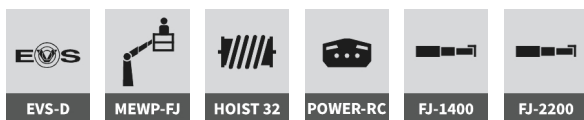
# 9520K-RCS



## Selected basics



## Selected options

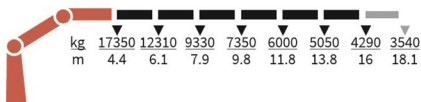


## Specifications

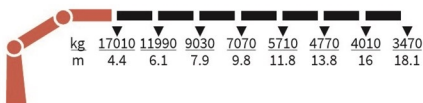
Unit	9520-K6	9520-K7	9520-K8	
↑	tm	76,3	75,1	75
→	m	16,1	18,3	20,3
↻	kgm	8163	8163	8163
↻	°	∞	∞	∞
↻	mm	2500	2500	2500
↻	mm	2550	2550	2550
↻	mm	1630	1630	1630
↻	mm			
↻	mm	8420	8420	8420
↻	Kg	7070	7330	7540
↻	Kg	1025	1025	1025
↻	bar	365	365	365
↻	l/min	80 - 120	80 - 120	80 - 120
⚡	kW	50 - 82	50 - 82	50 - 82



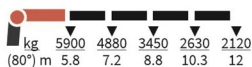
9520-K6-RCS



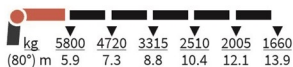
9520-K7-RCS



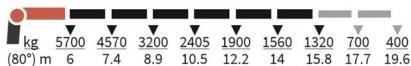
FJ2200-K4



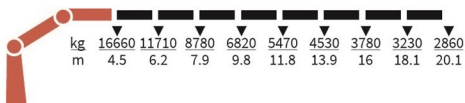
FJ2200-K5



FJ2200-K6



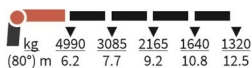
9520-K8-RCS



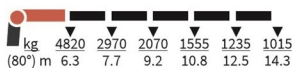
FJ1400-K3



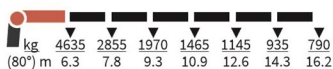
FJ1400-K4



FJ1400-K5



FJ1400-K6



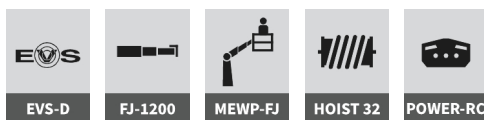
# 70200K-RCS



## Selected basics



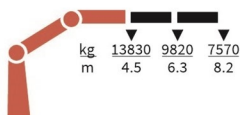
## Selected options



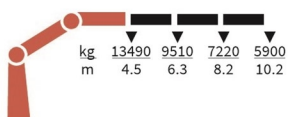
## Specifications

	Unit	7020-OK2	7020-OK3	7020-OK4	7020-OK5	7020-OK6
	tm	62,2	60,7	60	58,3	58,2
	m	8,3	10,4	12,4	14,7	17
	kgm	7142	7142	7142	7142	7142
	°	∞	∞	∞	∞	∞
	mm	2435	2435	2435	2435	2470
	mm	2550	2550	2550	2550	2550
	mm	1340	1340	1340	1340	1340
	mm					
	mm	8420	8420	8420	8420	8420
	Kg	4465	4765	5065	5335	5575
	Kg	925	925	925	925	925
	bar	375	375	375	375	375
	l/min	50 - 120	50 - 120	50 - 120	50 - 120	50 - 120
	kW	50 - 69	50 - 69	50 - 69	50 - 69	50 - 69

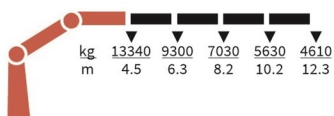
7020-OK2-RCS



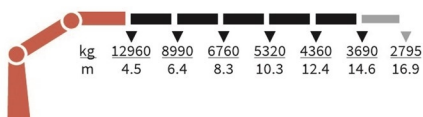
7020-OK3-RCS



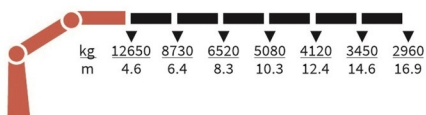
7020-OK4-RCS



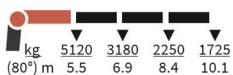
7020-OK5-RCS



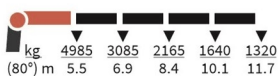
7020-OK6-RCS



FJ1200-K3



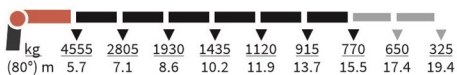
FJ1200-K4



FJ1200-K5



FJ1200-K6



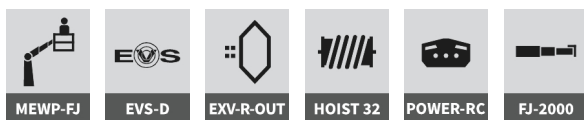
# 95200K-RCS



## Selected basics



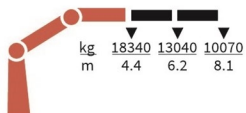
## Selected options



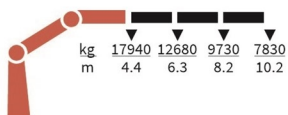
## Specifications

Unit	9520-OK2	9520-OK3	9520-OK4	9520-OK5	9520-OK6
tm	80,1	79,1	77,9	77,1	76
m	8,3	10,34	12,4	14,64	16,94
kgm	8163	8163	8163	8163	8163
°	∞	∞	∞	∞	∞
mm	2500	2500	2500	2500	2510
mm	2550	2550	2550	2550	2550
mm	1440	1440	1440	1440	1440
mm					
mm	8420	8420	8420	8420	8420
Kg	5670	6020	6360	6665	6930
Kg	1025	1025	1025	1025	1025
bar	365	365	365	365	365
l/min	80 - 120	80 - 120	80 - 120	80 - 120	80 - 120
kW	50 - 82	50 - 82	50 - 82	50 - 82	50 - 82

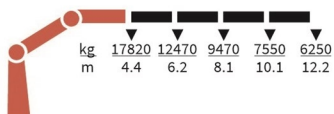
9520-OK2-RCS



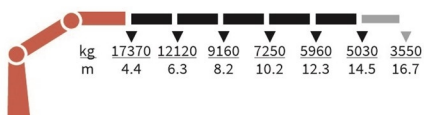
9520-OK3-RCS



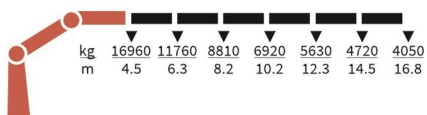
9520-OK4-RCS



9520-OK5-RCS



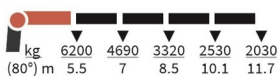
9520-OK6-RCS



FJ2000-K3



FJ2000-K4



FJ2000-K5



FJ2000-K6



# 1320KS-RCS



## Selected basics



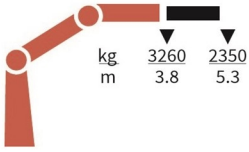
## Selected options



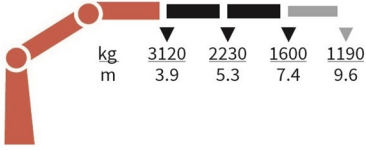
## Specifications

	Unit	1320-KS1	1320-KS2	1320-KS3
	tm	12,3	12	11,7
	m	5,3	7,5	9,8
	kgm	1325	1325	1325
	°	420	420	420
	mm	2135	2135	2135
	mm	2500	2500	2500
	mm	747	747	747
	mm	4615	4615	4615
	mm	5590	5590	5590
	Kg	1100	1225	1335
	Kg	170	170	170
	bar	345	345	345
	l/min	70 - 100	70 - 100	70 - 100
	kW	40 - 58	40 - 58	40 - 58

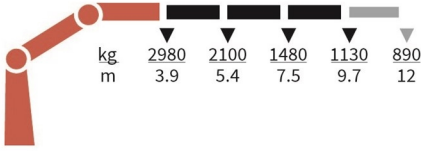
1320-KS1-RCS



1320-KS2-RCS



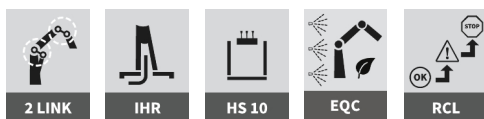
1320-KS3-RCS



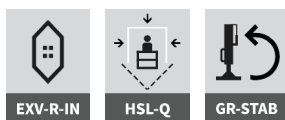
# 1800K-HS10



## Selected basics



## Selected options

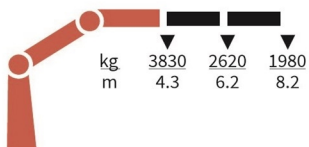


## Specifications

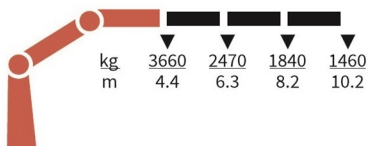
	Unit	1800-K2	1800-K3	1800-K4	1800-K5	1800-K6	1800-K7	1800-K8
	tm	16,6	16,1	15,6	15,2	14,7	14,3	14
	m	8,3	10,3	12,5	14,8	17,1	19,3	21,6
	kgm	2426	2426	2426	2426	2426	2426	2426
	°	400	400	400	400	400	400	400
	mm	2295	2295	2295	2295	2295	2295	2335
	mm	2500	2500	2500	2500	2500	2500	2500
	mm	885	885	885	885	885	995	995
	mm	5575	5575	5575	5575	5575	5575	5575
	mm	6455	6455	6455	6455	6455	6455	6455
	Kg	1840	1995	2180	2320	2445	2550	2635
	Kg	275	275	275	275	275	275	275
	bar	300	300	300	300	300	300	300
	l/min	55	55	55	55	55	55	55
	kW	28	28	28	28	28	28	28



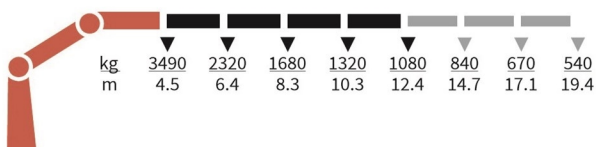
1800-K2-HS10-MC



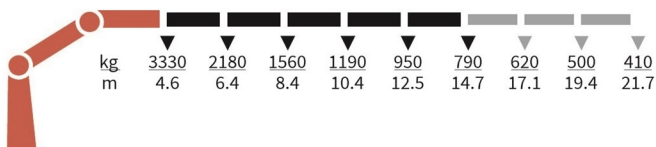
1800-K3-HS10-MC



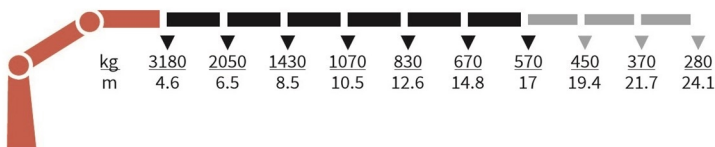
1800-K4-HS10-MC



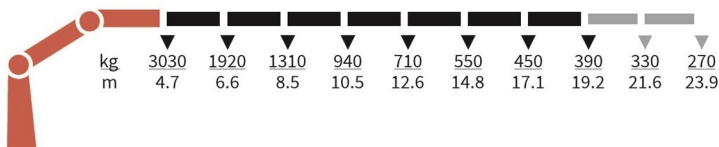
1800-K5-HS10-MC



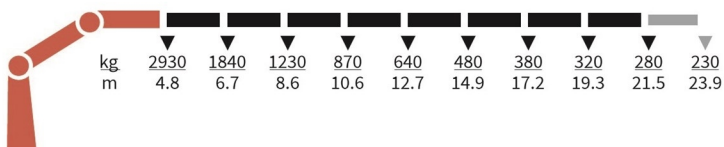
1800-K6-HS10-MC



1800-K7-HS10-MC



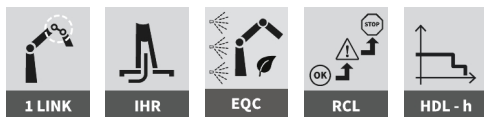
1800-K8-HS10-MC



# 1530T-MCS



## Selected basics



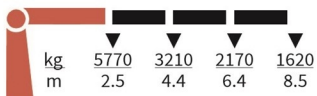
## Selected options



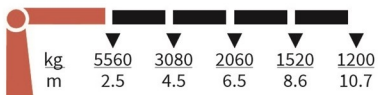
## Specifications

	Unit	1530-T3	1530-T4
	tm	14,3	14,2
	m	8,5	10,7
	kgm	1760	1760
	°	400	400
	mm	2560	2560
	mm	2500	2500
	mm	765	765
	mm	4615	4615
	mm	6470	6470
	Kg	1320	1440
	Kg	200	200
	bar	330	330
	l/min	45	45
	kW	25	25

1530-T3-MCS



1530-T4-MCS



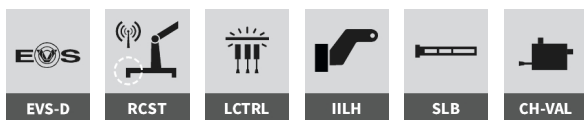
# 1630T-RCS



## Selected basics



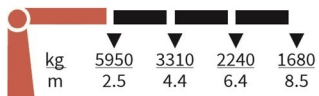
## Selected options



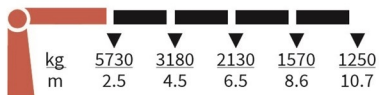
## Specifications

Unit	1630-T3	1630-T4	
↑	tm	14,7	14,6
→	m	8,5	10,7
	kgm	1760	1760
	°	400	400
	mm	2560	2560
	mm	2500	2500
	mm	765	765
	mm	4615	4615
	mm	6470	6470
	Kg	1320	1440
	Kg	200	200
	bar	340	340
	l/min	55	55
	kW	31	31

1630-T3-RCS



1630-T4-RCS



# 1910T-MC



## Selected basics



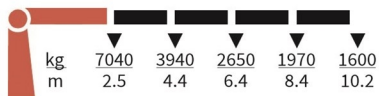
## Selected options



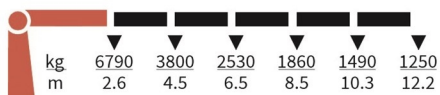
## Specifications

	Unit	1910-T4	1910-T5
	tm	17,9	17,8
	m	10,2	12,2
	kgm	2380	2380
	°	400	400
	mm	2610	2610
	mm	2500	2500
	mm	820	820
	mm	5575	5575
	mm	6455	6455
	Kg	1695	1815
	Kg	275	275
	bar	300	300
	l/min	55	55
	kW	28	28

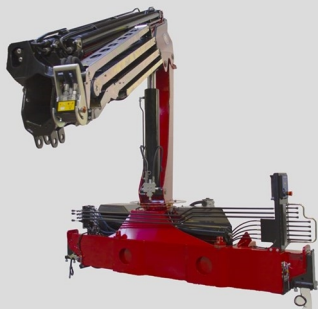
1910-T4-MC



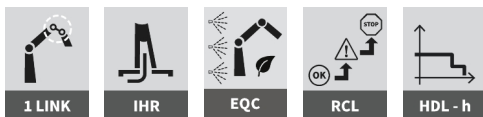
1910-T5-MC



# 2030T-MCS



## Selected basics



## Selected options

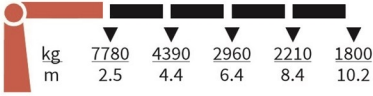


## Specifications

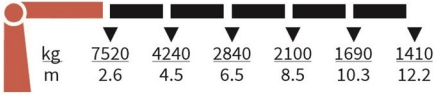
	Unit	2030-T4	2030-T5
	tm	19,8	19,7
	m	10,2	12,2
	kgm	2380	2380
	°	400	400
	mm	2610	2610
	mm	2500	2500
	mm	820	820
	mm	5575	5575
	mm	6455	6455
	Kg	1695	1815
	Kg	275	275
	bar	330	330
	l/min	55	55
	kW	30	30



2030-T4-MCS



2030-T5-MCS



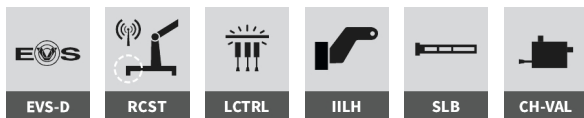
# 2130T-RCS



## Selected basics



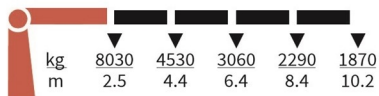
## Selected options



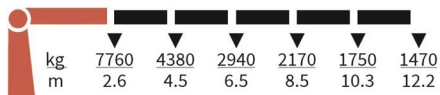
## Specifications

	Unit	2130-T4	2130-T5
	tm	20,4	20,3
	m	10,2	12,2
	kgm	2380	2380
	°	400	400
	mm	2610	2610
	mm	2500	2500
	mm	820	820
	mm	5575	5575
	mm	6455	6455
	Kg	1695	1815
	Kg	275	275
	bar	340	340
	l/min	55	55
	kW	31	31

2130-T4-RCS



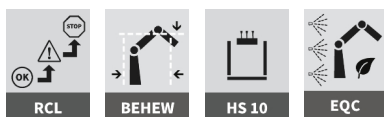
2130-T5-RCS



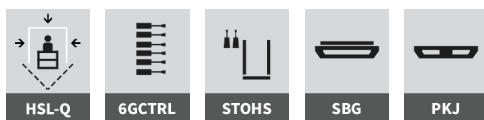
# 1444Z-RC



## Selected basics



## Selected options



## Specifications

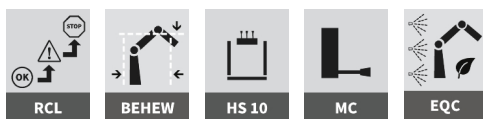
	Unit	1444-Z2
	tm	13,7
	m	8,2
	kgm	2400
	°	400
	mm	2427
	mm	2500
	mm	750
	mm	3500
	mm	4600
	Kg	1740
	Kg	210
	bar	280
	l/min	70
	kW	33



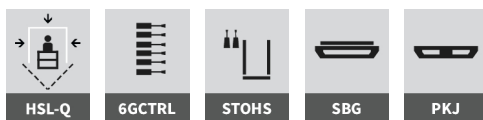
# 1643Z-MC



## Selected basics

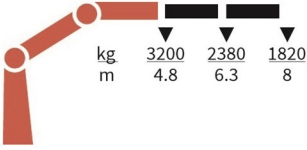


## Selected options



## Specifications

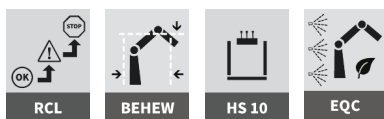
	Unit	1643-Z2
	tm	15,4
	m	8,2
	kgm	2400
	°	400
	mm	2427
	mm	2500
	mm	750
	mm	3500
	mm	4600
	Kg	1740
	Kg	210
	bar	310
	l/min	50
	kW	26



# 1643Z-RC



## Selected basics



## Selected options

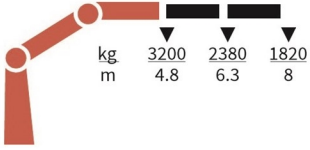


## Specifications

	Unit	1643-Z2
	tm	15,4
	m	8,2
	kgm	2400
	°	400
	mm	2427
	mm	2500
	mm	750
	mm	3500
	mm	4600
	Kg	1740
	Kg	210
	bar	310
	l/min	50
	kW	26



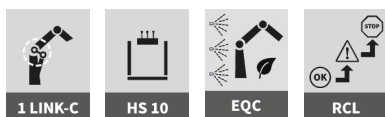
1643-Z2-RC



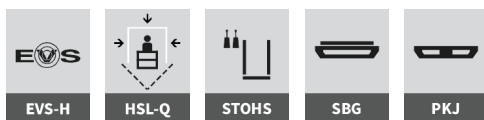
# 1943Z-MC



## Selected basics



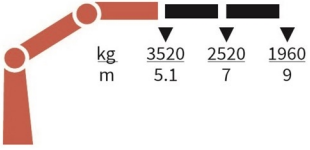
## Selected options



## Specifications

	Unit	1943-Z2
	tm	18,1
	m	9,1
	kgm	2750
	°	400
	mm	2445
	mm	2500
	mm	885
	mm	5575
	mm	6455
	Kg	2300
	Kg	290
	bar	295
	l/min	60 - 80
	kW	30 - 40

1943-Z2-MC



# 2243Z-RCS



## Selected basics



HDL-d



PCC



PFC



PVG 32



IHR



1 LINK-C



EQC

## Selected options



EVS-D



STOHS



HSL-Q



SBG



PKJ



RCST



HS 10RCS

## Specifications

	Unit	2243-Z2
	tm	20,7
	m	9,1
	kgm	2750
	°	400
	mm	2445
	mm	2500
	mm	860
	mm	5575
	mm	6455
	Kg	2300
	Kg	290
	bar	330
	l/min	70 - 100
	kW	34 - 48



# 1730L-RCS



## Selected basics



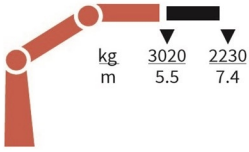
## Selected options



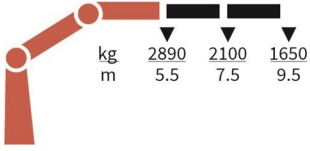
## Specifications

	Unit	1730-L1	1730-L2	1730-L3	1730-L4
	tm	16,5	15,9	15,4	14,9
	m	7,5	9,6	11,8	14
	kgm	1760	1760	1760	1760
	°	450	450	450	450
	mm	2515	2515	2515	2515
	mm	2500	2500	2500	2500
	mm	775	775	775	775
	mm	4615	4615	4615	4615
	mm	6470	6470	6470	6470
	Kg	1435	1575	1710	1845
	Kg	200	200	200	200
	bar	345	345	345	345
	l/min	70 - 100	70 - 100	70 - 100	70 - 100
	kW	40 - 58	40 - 58	40 - 58	40 - 58

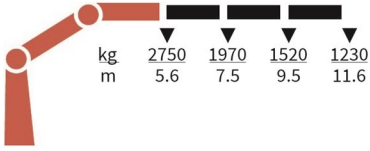
1730-L1-RCS



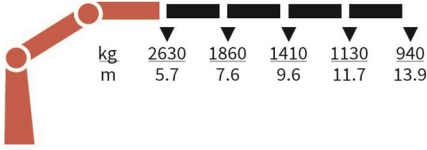
1730-L2-RCS



1730-L3-RCS



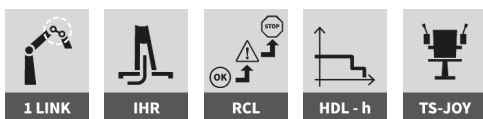
1730-L4-RCS



# 2110L-MC



## Selected basics



## Selected options

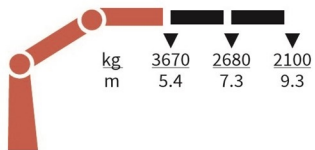


## Specifications

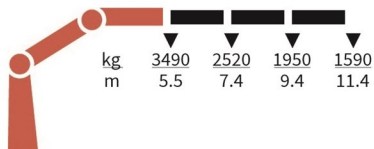
	Unit	2110-L2	2110-L3	2110-L4	2110-L5
	tm	20	19,2	18,7	18,2
	m	9,4	11,5	13,4	15,4
	kgm	2710	2710	2710	2710
	°	450	450	450	450
	mm	2600	2600	2600	2600
	mm	2500	2500	2500	2500
	mm	815	815	815	815
	mm	5575	5575	5575	5575
	mm	6455	6455	6455	6455
	Kg	2015	2170	2325	2465
	Kg	290	290	290	290
	bar	300	300	300	300
	l/min	80	80	80	80
	kW	39	39	39	39



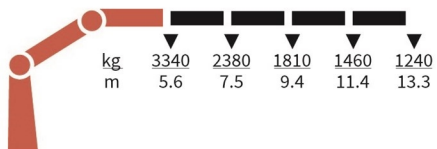
2110-L2-MC



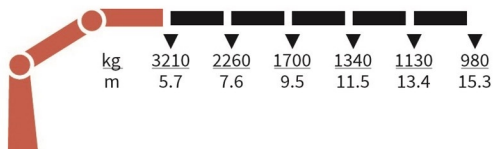
2110-L3-MC



2110-L4-MC



2110-L5-MC



# 2530L-RCS



## Selected basics



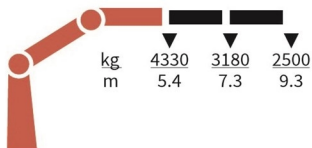
## Selected options



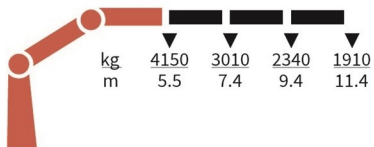
## Specifications

	Unit	2530-L2	2530-L3	2530-L4	2530-L5
	tm	23,6	22,9	22,3	21,8
	m	9,4	11,5	13,4	15,4
	kgm	2710	2710	2710	2710
	°	450	450	450	450
	mm	2600	2600	2600	2600
	mm	2500	2500	2500	2500
	mm	815	815	815	815
	mm	5575	5575	5575	5575
	mm	6455	6455	6455	6455
	Kg	2015	2170	2325	2465
	Kg	290	290	290	290
	bar	345	345	345	345
	l/min	70 - 120	70 - 120	70 - 120	70 - 120
	kW	40 - 69	40 - 69	40 - 69	40 - 69

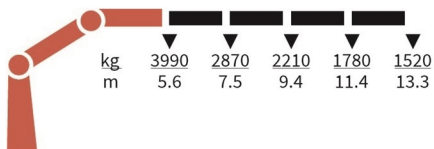
2530-L2-RCS



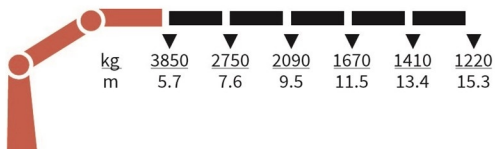
2530-L3-RCS



2530-L4-RCS



2530-L5-RCS



# 2310S-RCS



## Selected basics



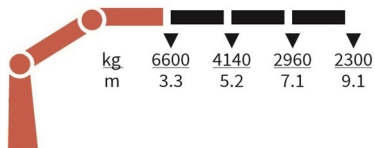
## Selected options



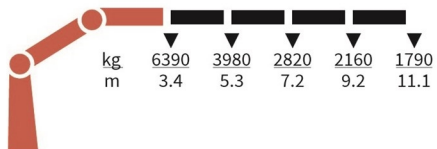
## Specifications

	Unit	2310-S3	2310-S4
	tm	21,7	21,4
	m	9,1	11
	kgm	2762	2762
	°	400	400
	mm	2610	2610
	mm	2500	2500
	mm	815	815
	mm	5575	5575
	mm	6455	6455
	Kg	2065	2265
	Kg	290	290
	bar	345	345
	l/min	70	70
	kW	40	40

2310-S3-RCS



2310-S4-RCS





## SYMBOLER

## SYMBOLS

## SYMBOLES

## SYMBOLE



tm

Lastmoment  
Load moment  
Lastmoment  
Couple de levage



mm

Støttebensbredde, standard  
Stabilizer spread, standard  
Abstützweite, Standard  
Entraxe maxi, stabilisateurs standard



m

Hydraulisk rækkevidde  
Hydraulic reach  
Hydr. Reichweite  
Portée hydraulique



mm

Støttebensbredde, ekstra bred  
Stabilizer spread, extra wide  
Abstützweite, extra breit  
Entraxe maxi, stabilisateurs extra large



kgm

Svingmoment  
Slewing torque  
Schwenkmoment  
Couple de rotation



kg

Vægt ekskl. støtteben  
Weight excl. stabilizers  
Gewicht ohne Stützbeine  
Poids sans stabilisateurs



°

Drejevinkel  
Slewing angle  
Schwenkbereich  
Angle de rotation



kg

Vægt, standardstøtteben  
Weight of stabilizers, standard  
Gewicht, Standardstützbeine  
Poids des stabilisateurs standard



mm

Højde over monteringsflade  
Height above mounting surface  
Höhe über Montagefläche  
Hauteur sur surface de montage



bar

Arbejdsdruk  
Working pressure  
Arbeitsdruck  
Pression de travail



mm

Bredde, sammenfoldet standard  
Width, folded, standard  
Breite, Transportstellung  
Largeur, grue repliée standard



l/min

Pumpeydelse  
Pump performance  
Pumpenleistung  
Débit de pompe maxi



mm

Længde uden ekstraventiler  
Length of crane, no extra valves  
Einbaumaß ohne Zusatzventile  
Longueur sans garnies



kW

Effekt  
Power consumption  
Kraftbedarf  
Puissance nécessaire



Løftekapacitet med manuelle forlængerarme  
Lifting capacity with manual extensions  
Hubkraft mit manueller Verlängerung  
Capacité de levage avec rallonges manuelles



Løftekapacitet uden manuelle forlængerarme  
Lifting capacity, no manual extensions  
Hubkraft, keine manuelle Verlängerung  
Capacité de levage sans rallonges manuelles



Link arm system at jib  
Ledarm ved knækarm  
Kniehebel am Knickarm  
Dispositif maxi-couple sur 2ème bras

**1 LINK**



Link arm system at column  
Ledarm ved søjle  
Kniehebel an der Säule  
Dispositif maxi-couple sur la colonne

**1 LINK-C**



Dual link arm system  
Dobbelt ledarmsystem  
Doppelkniehebel  
Système double maxi-couple

**2 LINK**



Stabilizer operation from top seat  
Støttebensbetjening fra topsæde  
Stützbeinbedienung vom Hochsitz aus  
Commande des béquilles depuis le siège

**2STOTS**



Operation of 6 functions from the ground  
Betjening af 6 funktioner fra jord  
Bedienung von 6 Funktionen vom Boden  
Commande de 6 fonctions depuis le sol

**6GCTRL**



AutoSwitch

**ASW**



Transport alarm  
Transportalarm  
Transportwarnung  
Avertisseur de transport

**BEHEW**



Cabin anti-crash  
Beskyttelse af førerhuset  
Schutz des Fahrerhauses  
Protection de la cabine

**CAC**



Double slewing gear  
Dobbelt svinggear  
Doppeltes Schwenktriebe  
Double engrenage planétaire

**DSG**



Engine control from the top seat  
Motorstyring fra topsæde  
Motorsteuerung vom Hochsitz aus  
Commande du moteur du siège sur colonne

**ECTRLTS**



Environmentally friendly quality coating  
Miljøvenlig kvalitetsbelægning  
Umweltfreundliche Oberflächenbehandlung  
Revêtement de qualité écologique

**EQC**



Electronic vehicle stability  
Stabilitetssikringssystem  
Standicherheitssystem  
Système de contrôle de la stabilité

**EVS**



Extra valves in hose reels, internally led  
Ekstraventiler i slangeruller, ført indvendigt  
Zusatzventile in Schlauchrollen, innenliegend  
Distr. compl. à enrouleurs, internes

**EXV-R-IN**



Extra valves in hose reels, externally led  
Ekstraventiler i slangeruller, ført udvendigt  
Zusatzventile in Schlauchrollen, außenliegend  
Distr. compl. à enrouleurs, externes

**EXV-R-OUT**



Full hoist preparation  
Komplet spilforberedelse  
Komplette Seilwindvorbereitung  
Préparation complète au treuil

**FHP**



Fly-jib

**FJ**



Manual swing-up stabilizers with gas spring  
Manuelt opsvingelige støtteben med gasfjeder  
Manuell schwenkbare Stützbeine mit Gasfeder  
Béquilles manuelles rotatives avec vérin à gaz

**GR-STAB**



Electronic speed adaptation  
Elektronisk hastighedstilpasning  
Elektronischer Temporegler  
Adaptation de vitesse électronique

**HDL-d**



Electro-hydraulic speed adaptation  
Elektro-hydraulisk hastighedstilpasning  
Elektro-hydraulischer Temporegler  
Adaptation de vitesse électro-hydraulique

**HDL-h**



Heated seat  
Sædevarme  
Sitzheizung  
Siège chauffant

**HEAT**



Hydraulic hoist  
Hydraulisk spil  
Hydraulische Seilwinde  
Treuril hydraulique

**HOIST**



Stand-up controls, direct control  
Hævet styring, direkte  
Hochstand, direkte Bedienung  
Poste homme debout, commande directe

**HS 10**



High stand flexible  
Flexibel hævet styring  
Flexibler Hochstand  
Poste homme debout flexible

**HS-F**



High stand safety system - quadrant  
Sikkerhedssystem til hævet styring - quadrant  
Sicherheitssystem für Hochstand - Quadrant  
Sécurité poste homme debout - Quadrant

**HSL-Q**





Stand-up controls with radio remote control  
Hævet styring m. radiofjernstyring  
Hochstand mit Funkfernsteuerung  
Poste homme debout avec radio-commande

**HS-RC**



Internal hose routing  
Indvendig slangeføring  
Innenliegende Schlauchführungen  
Cheminement interne des flexibles

**IHR**



Insert for increased lifting height  
Indstik til øget løftehøjde  
Einsatz für erhöhte Hubhöhe  
Rallonge pour hauteur sous crochet accrue

**IILH**



Intelligent parking assist system  
Intelligent parkeringssystem  
Intelligentes parksystem  
Système de stockage intelligent

**IPA**



Light over control positions  
Lys over betjeningssteder  
Lampe über Bedienstellen  
Éclairage des postes de commande

**LCTRL**



Limitation of working area, horizontal  
Begrænsning af arbejdsområdet, horisontalt  
Begrenzung des Arbeitsbereichs, horizontal  
Limitation zone de travail, horizontale

**LWH**



Personnel basket on crane  
Mandskabskurv på kran  
Hubarbeitskorb am Kran  
Nacelle élévatrice sur grue

**MEWP**



Personnel basket on fly-jib  
Mandskabskurv på fly-jib  
Hubarbeitskorb am Fly-Jib  
Nacelle élévatrice sur fly-jib

**MEWP-FJ**



Progressive crane control  
Progressiv kranstyring  
Progressive Kransteuerung  
Commande de la grue progressive

**PCC**



Priority flow control  
Prioriteret flowkontrol  
Priorisierte Flowkontrolle  
Régulation de débit prioritaire

**PFC**



Protection kit for jib  
Beskyttelseskit for kranarm  
Schutzsatz für Knickarm  
Kit de protection pour 2ème bras

**PKJ**



Radio remote control with colour display  
Radiofjernstyring med farvedisplay  
Funksender mit Farbdisplay  
Radio-commande avec écran couleur

**POWER-RC**



Lastindikering  
Load indication  
Lastanzeige  
Indicateur de charge

**RCI**



Lastmomentbegrænsning  
Load moment limitation  
Lastmomentbegrenzung  
Limitation du couple de levage

**RCL**



Remote control of stabilizers on crane  
Radiofjernstyring af støtteben på kranen  
Funkfernsteuerung der Stützbeine des Krans  
Radio-commande des béquilles sur la grue

**RCST**



Hydraulic stabilizer beams 4.2 m - 5.1 m  
Hydrauliske støttebensbomme 4,2 m - 5,1 m  
Hydraulische Auszugskasten 4,2 m - 5,1 m  
Coulisseaux hydrauliques 4,2 m - 5,1 m

**SB 42-51**



Slew braking control  
Bremsekontrol af svingbevægelse  
Schwenkstabilitätssystem  
Contrôle de freinage de la rotation

**SBC**



Stowing bracket for grab  
Parkeringsbeslag for grab  
Parkbeschlag für Zweischalengreifer  
Support de repliement de benne preneuse

**SBG**



Signal wire for hydraulic hook grab  
Singalledning til hydraulisk krog  
Signalleitung zum hydraulischen Lasthaken  
Fil de signal pour crochet hydraulique

**SHG**



Stowing lock, boom system  
Parkeringssikring af armsystem  
Sicherung des abgelegten Armsystems  
Verrou de stockage, système de flèches

**SLB**



Stabilizer operation from high stand  
Støttebensbetjening fra hævet styring  
Stützbeinbedienung vom Hochstand aus  
Cde des béquilles du poste homme debout

**STOHS**



Topsæde, joystick  
Top seat, joysticks  
Hochsitz, Kreuzsteuerhebel  
Siège sur colonne, joysticks

**TS-JOY**



Crane width: 1.7 or 2.0 m  
Kranbredde: 1,7 eller 2,0 m  
Kranbreite: 1,7 oder 2,0 m  
Largeur de grue: 1,7 ou 2,0 m

**WIDTH**



See all our abbreviations  
Se alle vores forkortelser  
Siehe alle unsere Abkürzungen  
Voir toutes nos abréviations



POWER TO LIFT

SINCE 1945



Find your nearest HMF partner here:  
[hmfcranes.com](https://www.hmfcranes.com)